

Commissioned for the Mass celebrated by His Holiness Pope John Paul II
in the Archdiocese of St. Louis, Missouri, January, 1999

Festival Alleluia

Assembly, Cantor, and Organ with opt. SATB Choir,
Brass Quartet/Quintet, Timpani, Suspended Cymbal, Flute, and Handbells

James Chepponis

Joyfully (♩ = 100)

Capo 3 (G) (Bm⁷) (Em) (Bm⁷) (C) (Am⁷) (D sus4) (D) (C/D) (D)
B \flat Dm⁷ Gm Dm⁷ E \flat Cm⁷ F sus4 F E \flat /F F

Organ

f Play cue-size notes only in the absence of Brass

tr *l. h.* *f*

(Ped.) Ped.

6 (Cantor)

Al - le - lu - ia, al - le - lu - ia, al - le - lu - ia.

(G) (Bm⁷) (Em) (Bm⁷) (C) (Am⁷) (D sus4) (D) (C/D) (D)
B \flat Dm⁷ Gm Dm⁷ E \flat Cm⁷ F sus4 F E \flat /F F

mf

10

Al - le - lu - ia, al - le - lu - ia, al - le - lu - ia!

(G) (Bm⁷) (Em) (Bm⁷) (C) (Am⁷) (G)
B \flat Dm⁷ Gm Dm⁷ E \flat Cm⁷ B \flat

The English translation of the Gospel verses from the *Lectionary for Mass* © 1969, 1981, 1997, International Committee on English in the Liturgy, Inc. All Rights Reserved.

Available editions: Full Score MSM-80-847
Choir Score MSM-80-847A
Instrumental Parts (Brass/Handbells) MSM-80-847B
Reproducible congregational part included on page 6.

Copyright © 1999 MorningStar Music Publishers of St. Louis
1727 Larkin Williams Road, Fenton, MO 63026. Printed in U.S.A.

All rights reserved. No part of this publication may be reproduced, stored in a retrieval system, or transmitted, in any form or by any means, mechanical, electronic, recording, photocopying or otherwise, anywhere in the world, including public performance for profit, without the prior written permission of MorningStar Music Publishers.

Refrain (+ Assembly)*

14 *f*

Cantor
Assembly

Al - le - lu - ia, al - le - lu - ia, al - le - lu - ia.

Soprano
Alto

Al - le - lu - ia, al - le - lu - ia, al - le - lu - ia, al - le - lu - ia.

Tenor
Bass

f

(G) (Bm⁷) (Em) (Bm⁷) (C) (Am⁷) (D sus4)(D) (C/D) (D)
B^b Dm⁷ Gm Dm⁷ E^b Cm⁷ F sus⁴ F E^b/F F

Organ

f

18 *ff* *Last time to CODA* ♠

Al - le - lu - ia, al - le - lu - ia, al - le - lu - ia!

ff *Last time to CODA* ♠

Al - le - lu - ia, al - le - lu - ia, al - le - lu - ia!

ff *Last time to CODA* ♠

Al - le - lu - ia, al - le - lu - ia, al - le - lu - ia!

ff *Last time to CODA* ♠

(G) (Bm⁷) (Em) (Bm⁷) (C) (Am⁷) (G)
B^b Dm⁷ Gm Dm⁷ E^b Cm⁷ B^b

*The choir should sing in unison with the assembly the first time the refrain is sung.

Verse(s)

22

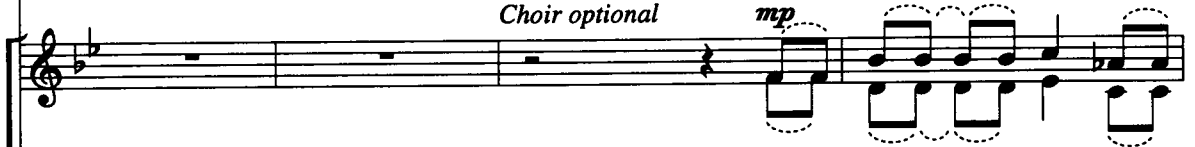
Cantor *mf*



- 1. O — Lord, ——— o - pen our hearts, to —
- 2. If to - day — you — hear God's — voice, O —
- 3. Your — words — give — joy to my heart, your —
- 4. Your — word — is a lamp for my feet, and a
- 5. Your — word, — O — Lord, is — truth; make us
- 6. I — hope ——— in the — Lord, I —
- 7. Who - ev - er keeps the word of — Christ grows —

Choir optional

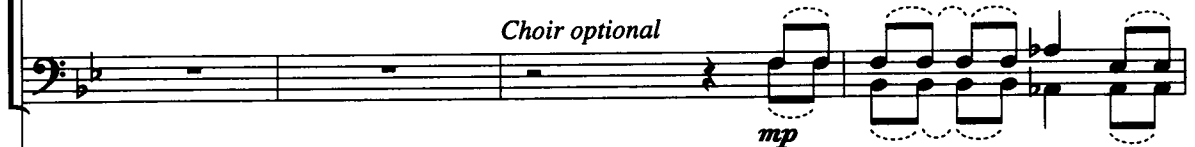
mp



- 1. O — Lord, ——— o - pen our
- 2. If to - day — you — hear God's —
- 3. Your — words — give — joy to my
- 4. Your — word — is a lamp for my
- 5. Your — word, — O — Lord, is —
- 6. I — hope ——— in the —
- 7. Who - ev - er keeps the word of —

Choir optional

mp



(G) (Dm⁷) (G) (Dm⁷)
B^b Fm⁷ B^b Fm⁷

(G) (Dm⁷)
B^b Fm⁷

(G) (Dm⁷)
B^b Fm⁷

